

Newsletter



Graiseley Primary School

Graiseley Hill

Wolverhampton

WV2 4NE

Phone:(01902) 558745

Email: graiseleyprimaryschool@wolverhampton.gov.uk

Where everybody wants to be: everybody is welcome and enjoys success!

A message from the Head:

As we come to the end of a very busy term, I would like to thank everyone for all their hard work: the children for their efforts in class, the staff for all that they do for the children and parents and carers for working with us and endeavouring to get your child into school every day and on time.

The last few weeks have been particularly busy as we have enjoyed a number of Christmas celebrations. We have enjoyed the Nativity put on by EYFS, Years 1 and 2 have explored their creativity, KS2 put together a lovely Christmas Carol Concert and the Choir have sung for Christmas!

I would like to wish everyone a peaceful and happy Christmas holiday and we all look forward to seeing children back in school on Tuesday 9th January 2024!

Best wishes, Mrs Humphries



Dates for the Diary

08.01.24 - INSET Day School Closed for Pupils

09.01.24 - School reopens to pupils for the Spring Term

12.01.24 - Y4 Come Dine with Me!

19.01.24 - Geography Field Work Day—including a visit from a real-life explorer!

23.02.24 - Y3 to Wolverhampton Art Gallery

02.02.24 - School Photos

07.02.24 - Parents Evening

09.02.24 - Children's Mental Health Day

09.02.24 - Y3 Class Assembly: Mental Health Week

12-16.02.24 - Half Term

23.02.24 - Y3 Come Dine with Me

07.03.24 - World Book Day

08.03.24 - YR Class Assembly - Mothers Day

13.03.24 - Frankly Alpacas visiting EYFS

15.03.24 - Y2 Come Dine with Me

22.03.24 - Y5 Class Assembly - Easter

22.03.24 - Easter Holiday begins at 3:15pm.

Events from Autumn 2



Children In Need Day



Disability and Antbullying Day



Y5 and Y6
JLR Visit



Penn Puppets Assembly



Y2 Diwali Assembly



Remembrance Day

Attendance



**EVERY
SCHOOL DAY
COUNTS**

Attendance Fact:

Generally, the higher the percentage of sessions missed across a key stage at KS2, the lower the level of attainment at the end of the key stage.

- Among pupils with no missed sessions over KS2, 83.9% achieved the expected standard compared to 40.2% of pupils who were persistently absent.

Click the link to find out more:

[Is my child too ill for school?](#)

Parking around school



Parking around school remains an issue. We still have cars stopping on the areas marked as above. This sign means no stopping (even if dropping off and picking up children).

PLEASE do not park illegally: help keep all the children safe.

Thank you for your co-operation: we just want to keep children safe!

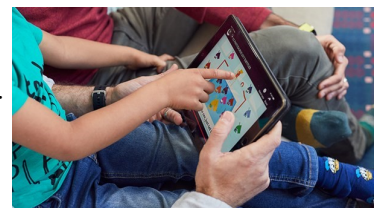
Start of the school day



A reminder: Children are not supervised at school until 8:40am. Please do not leave your children unattended before this time, school staff are not on duty to supervise them until 8:40am.

Internet Safety Tips

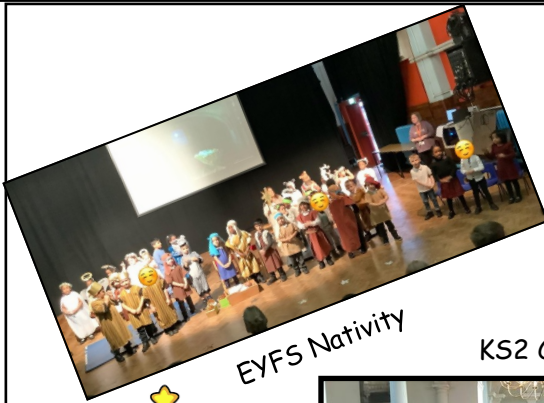
We all spend too much time online, especially children, it is important to be vigilant about what your child is doing online - talk to them frequently and be present when they are using technology. Too many children are accessing games, videos and apps that are inappropriate. Here a few tips to think about to help keep your child safe online:



- The internet was not designed for children. Children can be vulnerable online - be involved in their online lives.
- Establish rules and boundaries about technology use in your home - when, where and for how long. Remember you need to model healthy online behaviour as well.
- Many children do not report online harm, either experienced by them or their peers. Encourage your children to talk to you if anything worries them.



Christmas at Graiseley Primary School



EYFS Nativity

Sing for Christmas



KS2 Carol Concert



KS1 Christmas Crafts



Timings of the School Day - Changes for September 2024



In order to be in line with Government requirements from September 2024 the school day will start at 8:45am - this is 5 minutes earlier than our current start time. We will continue to remind you throughout the next two terms ready for September.

Staff News

As we come to the end of this term we say farewell to:
Miss Bhatti our EYFS TA and Mrs Marway and Mrs Mahay who are lunchtime supervisors. We wish them all the very best and thank them for all their hard work. In January we will welcome Miss Grice as a new TA and Mrs G Kaur and Mrs B Kaur as new lunchtime supervisors.

Did you know your parking means you are putting us in danger?

The yellow lines are there to keep us safe.

If you park on the yellow lines you are blocking our view of the road when we cross.

If you park on the corner you are blocking our view of the road when we cross.

If you are speeding, you could seriously hurt one of us.

Please could we ask you to park safely and considerately in the future.

Thank you



We look forward to seeing everyone back in school on January 9th 2024